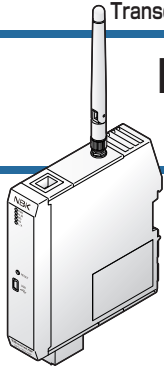


## Transceivers - EtherNet/IP™ Compliant

# EPC-210-EIP

## Simple Guide

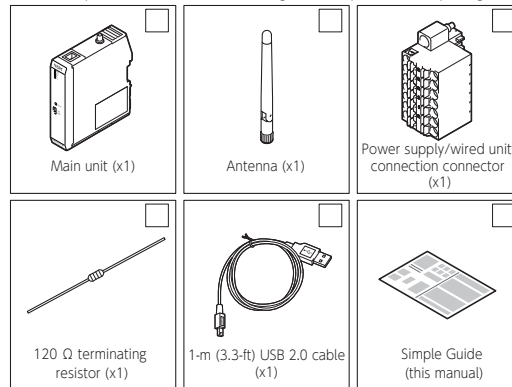


**NBK**  
Couplings, Screws, Clampers

We wish to thank you for purchasing this Transceivers - EtherNet/IP™ Compliant (EPC-210-EIP) from NBK. This manual (Simple Guide) only contains a brief overview of this product. Before using this product, carefully read this Simple Guide as well as the more detailed Transceivers - EtherNet/IP™ Compliant (EPC-210-EIP) Instruction Manual to ensure proper and safe operation.

### [Package Contents]

Before use, please confirm that the following items are present in the package.



### [Related Instruction Manuals]

The following instruction manuals are available for products other than the one covered in this Simple Guide.



#### Transceivers - EtherNet/IP™ Compliant (EPC-210-EIP) Instruction Manual

Contains detailed explanations regarding this product. Be sure to thoroughly read this manual before using this product.



#### Dedicated Software (EPU-COM) Instruction Manual

Contains detailed explanations of the dedicated software that is used to configure and operate this product.

#### [Instruction Manual Download Link]

[https://www.nbk1560.com/products/mechatronics/positioning\\_unit/download/epc-210-eip-manual/](https://www.nbk1560.com/products/mechatronics/positioning_unit/download/epc-210-eip-manual/)

## Safety Precautions

To ensure safety, please thoroughly read the following precautions and understand correctly before using this product.

- (1) When setting up a system that includes wireless positioning units, be sure to confirm the specifications of each equipment and device used in the system, and make sure that they are operated within their specified ratings and performance limits. Be sure to implement appropriate safety measures such as installing a safety circuit that minimizes danger even in the event of a failure.
- (2) To ensure safe operation of the wireless positioning units, be sure to thoroughly read the Safety Precautions and Radio Wave and EMC Precautions in the instruction manual for each equipment or device used in this product and its system.
- (3) Customers are requested to confirm all standards and regulations that apply to the wireless positioning units.
- (4) Improper handling or misuse may lead to an accident or shorten the service life of the product.
- (5) Unless otherwise stipulated by law, we shall not be held liable for any damages resulting from improper use by the customer or a third party, failures that occur during use, other defects, or damages caused by the use of this product.



**Indicates that improper handling can lead to a dangerous situation that may result in death or serious injury**

### ■ Precautions Related to Installation and Wiring Work

#### [Precautions to Prevent Injury, Electric Shock, Fire, or Failure]

- Be sure to install the product in a safe and secure manner to prevent fire or accidents in case of an earthquake.
- Do not install in a place with high humidity or an excessive amount of dust.
- Please contact us if you wish to use it in a special environment or a purpose that it was not designed for.
- Ensure that wiring work is performed after installation and the power supply terminal connections are properly insulated.
- Be sure to install an external emergency stop circuit so that operation is immediately stopped and the power is shut off in the event of an abnormality.
- Make sure that the power supply and other cords are protected from damage.
- Ensure that fragments of metal cannot enter the product, it is protected from splashes of water, and it is always kept dry.
- Do not install the product or perform wiring work with wet hands.
- Do not install the product in a place where it will be exposed to violent vibration or shock.

### ■ Precautions Related to Operation and Inspection

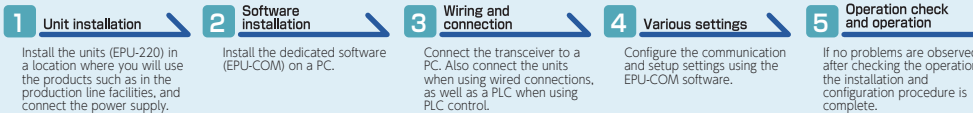
#### [Precautions to Prevent Injury, Electric Shock, Fire, or Failure]

- When an error occurs, remove the cause, and check safety before restarting operation.
- Persons with a pacemaker must maintain the proper distance of separation from this product.
- Be sure to perform maintenance and inspection on a monthly basis and ensure that adequate space is provided for such work.
- Do not disassemble, repair, or modify the product.
- If you observe a failure, immediately shut off the power supply and do not turn it back on.
- Do not move, inspect, or perform wiring work while the product power is on.
- Do not handle flammable gas in the vicinity of the product.
- Do not operate with wet hands.

## Product Overview

[Flow from Installation to Operation]

\* For more details regarding how to register, configure, and operate each equipment, please refer to their Related Instruction Manuals.



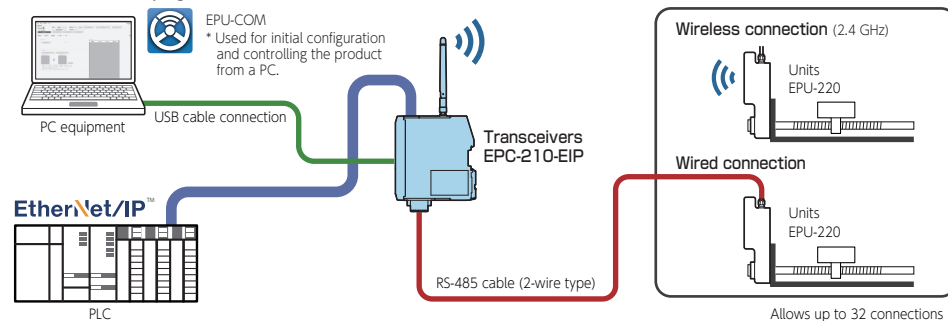
### Transceivers - EtherNet/IP™ Compliant (EPC-210-EIP)

- A dedicated transceiver for use with wireless positioning units.
- Connectable to a PLC using the EtherNet/IP™ protocol.
- Able to automatically and collectively control up to 32 wireless positioning units.
- The transceiver settings can be easily configured using a PC with the dedicated software (EPU-COM).
- The DIN rail foot allows it to be easily attached to a DIN rail in a single step.

#### [NOTE]

The EPC-210-EIP is an adapter equipment that supports EtherNet/IP™. EtherNet/IP™ is an industrial multi-vendor network that uses Ethernet. EtherNet/IP™ is a registered trademark of ODVA, Inc.

### [Connection Example]



UM-EPC210EIP-SG-01E



**Indicates that improper handling may lead to minor injury or damage to this product or peripheral equipment**

### ■ Precautions Related to Installation and Wiring Work

#### [Precautions to Prevent Injury, Electric Shock, Fire, or Failure]

- Ensure that the wiring work is correctly performed and install according to the specified procedure.
- Install the product in a location with an ambient temperature ranging from -5 to 55°C (23 to 131°F) (no freezing) and an ambient humidity ranging from 20 to 85% RH (no condensation).
- Check and adjust all settings before operation in order to prevent unexpected operation.
- Do not use the product outdoors or in places where it may be exposed to direct sunlight (UV rays).
- Do not use the product in places with a generation of static electricity.
- Do not directly connect the product to an AC power supply.
- Do not apply voltage with any power supply other than that specified.
- Do not stack the product.
- Avoid strong impacts or other damage.

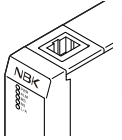
### ■ Precautions Related to Operation and Inspection

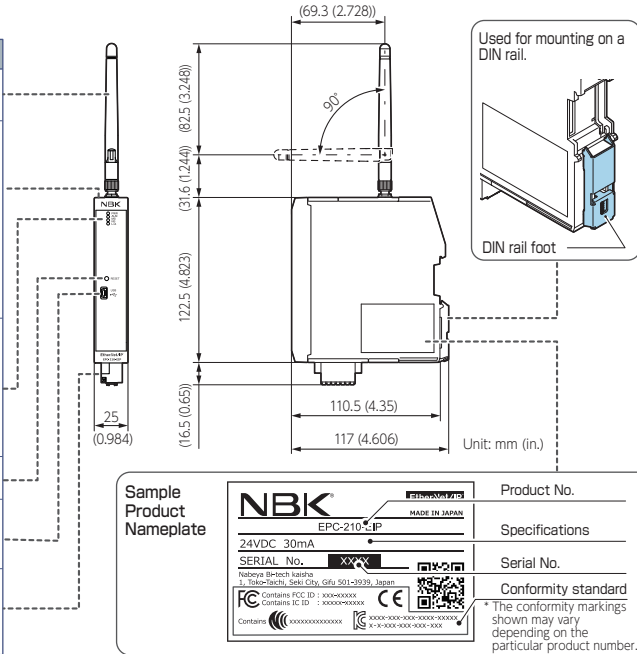
#### [Precautions to Prevent Injury, Fire, or Failure]

- Be sure to turn off the power if you plan on not using the product for an extended period of time.
- Do not frequently turn the power on and off.
- Do not approach the device when a power failure occurs due to the possibility of operation suddenly restarting when the power is restored.
- Do not make any drastic adjustments or changes
- Do not stand on or place heavy objects on top of the product.

# Part Names and Functions / Dimensional Outline Drawings

## EPC-210-EIP

Name	Description
Antenna	The antenna for wireless communication. (360° rotatable)
EtherNet/IP™ port (LAN port)	Connects the EtherNet/IP™ communication cable.  For details regarding EtherNet/IP™, please refer to the EPC-210-EIP Instruction Manual.
Monitor LED	Displays the current status of the transceiver. <ul style="list-style-type: none"> <li>○ PWR</li> <li>○ ALM</li> <li>○ MS</li> <li>○ NS</li> <li>○ L/A</li> </ul> For more details regarding LED lighting patterns, please refer to the EPC-210-EIP Instruction Manual.
Reset switch	Restarts the transceiver.
USB port (Mini USB Type-B)	Connects to a PC with EPU-COM installed using the included USB cable.
Power supply/wired units connection connector	Connects the 24 VDC power supply or wired units.



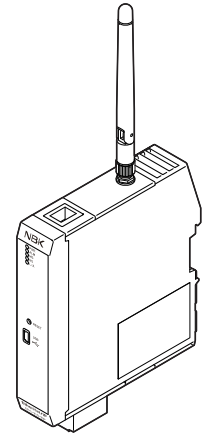
# Inspection and Maintenance

To ensure safe operation, be sure to perform inspections on a monthly basis. If any abnormality is found, immediately stop operation and do not restart until the issue has been resolved.

## [Precautions for Inspection]

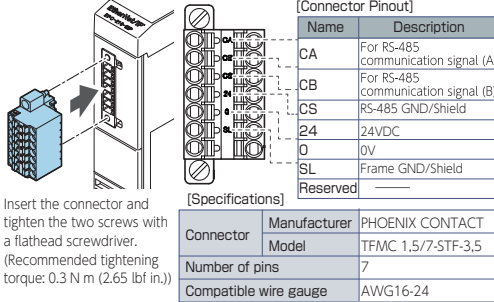
The operator shall be responsible for turning the power on and off. Be sure to carry out the following inspections to prevent accidents.

Inspection Checklist	
1	Is the power supply voltage within the specified range? <input type="checkbox"/>
2	Is the operating environment within the specification ranges? <input type="checkbox"/>
3	Is there an abnormality such as abnormal odor or heat generation? <input type="checkbox"/>
4	Is there adhesion of dust or other foreign material? <input type="checkbox"/>
5	Is the DIN rail mount loose? <input type="checkbox"/>
6	Is a connector loose? <input type="checkbox"/>
7	Is any cable damaged or excessively stressed? <input type="checkbox"/>
8	Is the antenna loose or damaged? <input type="checkbox"/>
9	Is there any scratch or deformation on the main unit? <input type="checkbox"/>



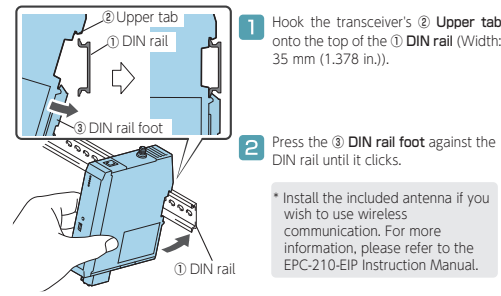
# Connections

## Power Supply/Wired Units Connection Connector

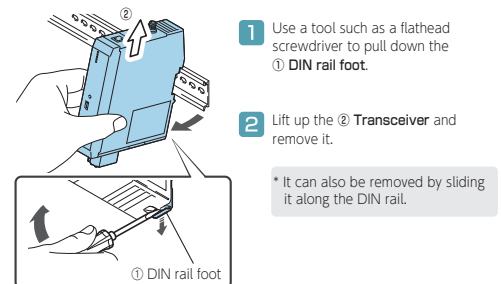


# Installation

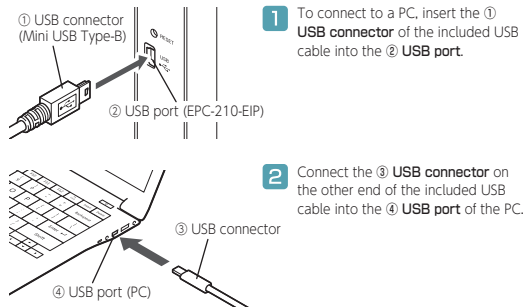
## DIN Rail Mounting



## Removal From DIN Rail



## USB Cable Connection



# Specifications

## Transceivers - EtherNet/IP™ Compliant (EPC-210-EIP)

Operating environment	Temperature	-5 to 55°C (23 to 131°F) (no freezing)
	Humidity	20 to 85% RH (no condensation)
Input voltage		24 VDC ± 10% (external power supply)
		5 VDC ± 5% (USB power supply)
Current consumption		30mA
Host connection method		PLC: EtherNet/IP™
		PC: USB2.0
Maximum number of connections		32 units
Units connection method	Wireless	2.4 GHz wireless communication
	Wired	RS-485
Wireless communication distance (reference value)	Indoors	60 m (200 ft)
	Outdoors	1200 m (3900 ft)
External dimensions (Excluding connectors and antenna)		25 mm x 122.5 mm x 117 mm (0.984 in. x 4.823 in. x 4.606 in.)
Mass (Excluding connectors and antenna)		130 g (4.59 oz)

## Warranty Information

[Warranty Period]	One year after delivery.
[Warranty Scope]	Under normal usage conditions in accordance with this manual, repairs or replacement shall be provided free of charge as long as the failure occurred within the warranty period.
[Warranty Conditions]	Even within the warranty period, a fee may be charged in any of the following cases:

- When the issue related to the claim was caused by improper use, repairs, or modifications.
- When the issue related to the claim was caused by the product being dropped after purchase, or damage during transportation.
- When the issue related to the claim was caused by usage outside of the product specifications.
- When the issue related to the claim was caused by fire, earthquake, lightning, wind and flood damage, salt damage, abnormal power supply voltage, or any other man-made or natural disaster.
- When the issue related to the claim was caused by exposure to water, oil, fragments of metal, or other foreign materials.

\* This warranty only covers the product (main unit) itself. Secondary damage caused by the product failure shall not be covered.

## Contact :

Customer Service Business Hours: 8:00 to 17:00 on weekdays, Eastern Standard Time

+1 (484) 685-7500 +1 (484) 685-7600

https://www.nbk1560.com/en-US/ info.us@nbk1560.com

307 East Church Road, Suite 7, King of Prussia, PA 19406, USA